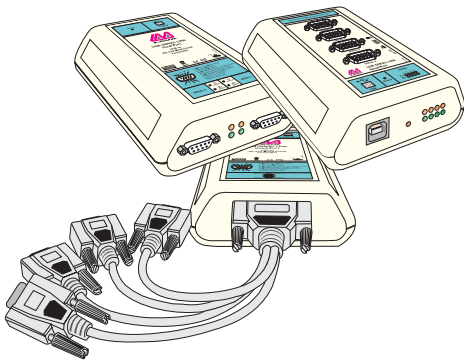


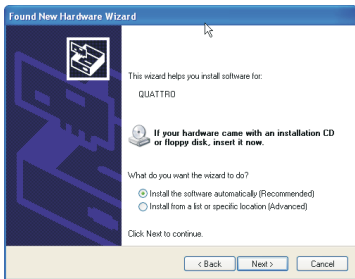
LAVA USB-Serial Link Quick Installation Guide



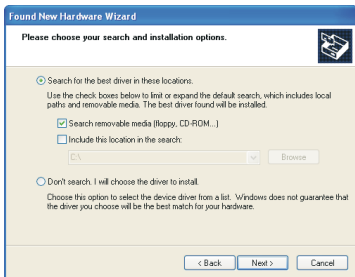
Rev. A00

Windows 2000/ XP/Vista Installation

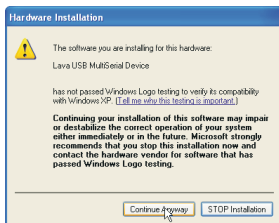
1. Connect the LAVA USB-Serial Link to any free USB port in your PC. After a moment, Windows will detect the device and open the Found New Hardware wizard (four-port USB-Serial Link shown).



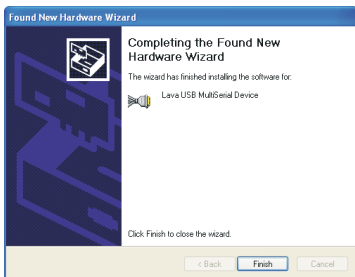
2. Choose the location of the drivers for the LAVA USB-Serial Link (typically, either on the LAVA Installation CD or in a location where files are that have been downloaded from the Internet).



- When it detects the drivers to be installed, Windows will open a warning that the drivers have not passed Windows Logo testing with Microsoft. This warning can be ignored. Click "Continue Anyway".



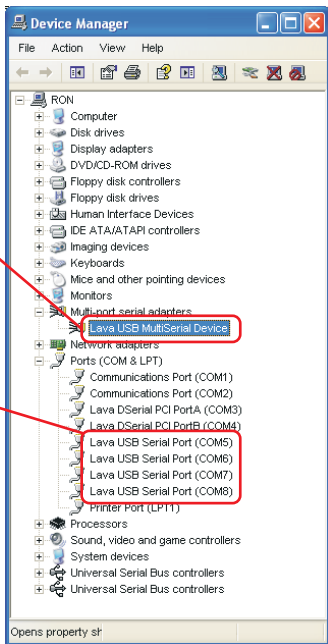
- You will need to install drivers for each serial port sequentially. Once one port has finished installing, the Found New Hardware wizard will reappear and you will install the next, until all ports are installed. At that point, Windows will finalize the installation and notify you that the wizard has finished installing the driver software.



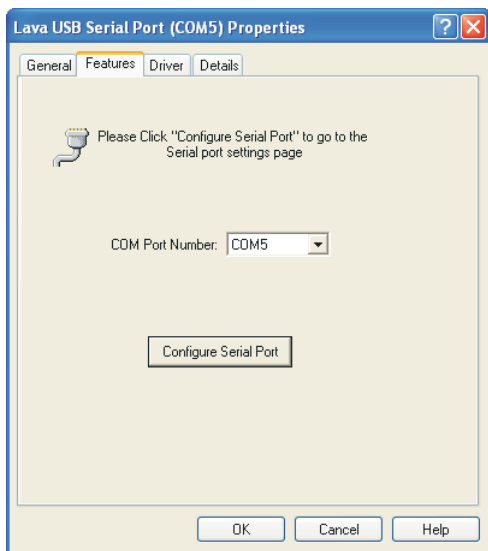
5. The installed LAVA USB-Serial Link appears in Windows' Device Manager under the "Multi-port serial adapters" heading.

6. Each installed port appears under "Ports (COM & LPT)" as a "Lava USB Serial Port".

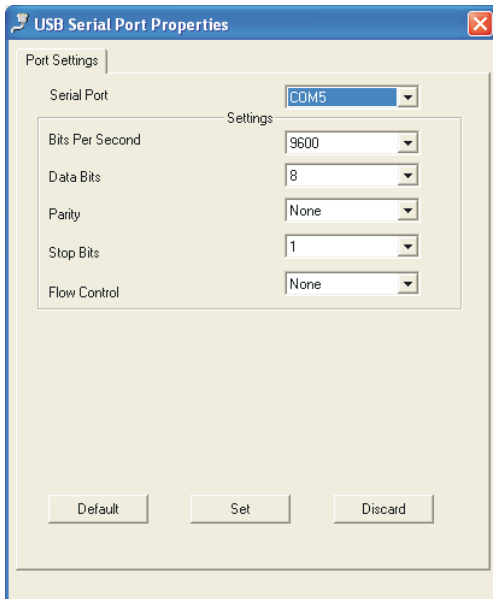
NOTE: On installation, the LAVA USB-Serial Link ports on the four-port USB-Serial Links enumerate in the order 2, 1, 3, 4. This means that in the example in the screen capture opposite, the port identified as COM5 will be physical port 2 on the device, and so forth.



7. Right-clicking on the port entry for a LAVA USB-Serial Link port in Windows' Device Manager opens a "Properties" option page. Under the "Features" tab you can change the COM port number that Windows will use for that port if you desire a different port assignment.



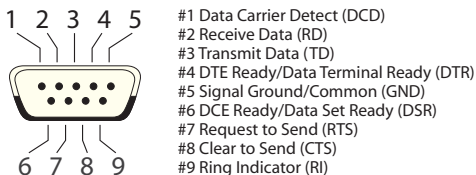
8. Clicking on the "Configure Serial Port" button on the serial port "Features" page opens the USB Serial Port Properties" page for that port. On this page, the standard serial port properties (baud rate, data bits, parity, stop bits, and flow control) can be modified as needed.



LAVA USB-Serial Link

Serial Port Pinout

The LAVA USB-Serial Link uses the standard DB-9 male RS-232 pinout as shown below.



LAVA

Technical Support

9:00 am to 5:30 pm Monday to Friday (Eastern Time)

Tel: +416 674-5942

Fax: +416 674-8262

E-mail: tech@lavalink.com

Internet: www.lavalink.com



LAVA Computer MFG Inc.



This device complies with part 15 of the FCC Rules. Operation is subject to the following conditions: (1) This device may not cause harmful interference, and (2) this device must accept any interference received, including interference that may cause undesired operation.

